

DRAWING LIST

DRAWING NO.	DRAWING NAME	REVISION
DA 1001	COVER SHEET	J
DA 1002	COMPLIANCE TABLE	E
DA 1003	SITE CONTEXT	A
DA 1004	SITE LOCATION	A
DA 1005	SITE PLAN	D
DA 1006	SITE ANALYSIS PLAN	A
DA 1007	STORAGE SCHEDULE	A
DA 1009	ADG SETBACK DISCUSSION	B
DA 1101	BASEMENT 6 FLOOR PLAN	A
DA 1102	BASEMENT 5 FLOOR PLAN	E
DA 1103	BASEMENT 4 FLOOR PLAN	D
DA 1104	BASEMENT 3 FLOOR PLAN	D
DA 1105	BASEMENT 2 FLOOR PLAN	E
DA 1106	BASEMENT 1 FLOOR PLAN	D
DA 1107	LOWER FIRST FLOOR PLAN	G
DA 1107.1	LOWER FIRST FLOOR DEMOLITION PLAN	C
DA 1108	UPPER FIRST FLOOR PLAN	D
DA 1109	LEVEL 2 FLOOR PLAN	F
DA 1110	LEVEL 3 FLOOR PLAN	F
DA 1111	LEVEL 4 FLOOR PLAN	E
DA 1112	LEVEL 5 FLOOR PLAN	F
DA 1113	LEVEL 6 FLOOR PLAN	E
DA 1114	LEVEL 7 FLOOR PLAN	D
DA 1115	TOWER A LEVEL 7 & 8 FLOOR PLANS	C
DA 1116	TOWER A LEVEL 9 & 10 FLOOR PLANS	F
DA 1117	TOWER A LEVEL 11 & 12 FLOOR PLANS	D
DA 1118	TOWER A LEVEL 13 & 14 FLOOR PLANS	D
DA 1119	TOWER A LEVEL 15 & 16 FLOOR PLANS	D
DA 1120	TOWER A LEVEL 17 & 18 FLOOR PLANS	F
DA 1121	TOWER A LEVEL 19 & 20 FLOOR PLANS	D
DA 1122	TOWER A LEVEL 21 & 22 FLOOR PLANS	D
DA 1123	TOWER A LEVEL 23 & 24 FLOOR PLANS	D
DA 1124	TOWER A LEVEL 25 & 26 FLOOR PLANS	D
DA 1125	TOWER A LEVEL 27 & 28 FLOOR PLANS	D
DA 1126	TOWER A LEVEL 29 & 30 FLOOR PLANS	E
DA 1127	TOWER A LEVEL 31 & 32 FLOOR PLANS	E
DA 1128	TOWER A LEVEL 33 & 34 FLOOR PLANS	D
DA 1129	TOWER A LEVEL 35 & 36 FLOOR PLANS	D
DA 1130	TOWER A LEVEL 37 & 38 FLOOR PLANS	D
DA 1131	TOWER A LEVEL 39 & 40 FLOOR PLANS	D
DA 1132	TOWER A LEVEL 41 & 42 FLOOR PLANS	E
DA 1133	TOWER A LEVEL 43 & 44 FLOOR PLANS	D
DA 1134	TOWER A LEVEL 45 & 46 FLOOR PLANS	D
DA 1135	TOWER A LEVEL 47 & 48 FLOOR PLANS	D
DA 1136	TOWER A LEVEL 49 & 50 FLOOR PLANS	D
DA 1137	TOWER A LEVEL 51 & 52 FLOOR PLANS	D
DA 1138	TOWER A LEVEL 53 & ROOF FLOOR PLANS	F
DA 1161	TOWER B LEVEL 7 & 8 FLOOR PLANS	D
DA 1162	TOWER B LEVEL 9 & 10 FLOOR PLANS	D
DA 1163	TOWER B LEVEL 11 & 12 FLOOR PLANS	D
DA 1164	TOWER B LEVEL 13 & 14 FLOOR PLANS	D
DA 1165	TOWER B LEVEL 15 & 16 FLOOR PLANS	D
DA 1166	TOWER B LEVEL 17 & 18 FLOOR PLANS	D
DA 1167	TOWER B LEVEL 19 & 20 FLOOR PLANS	D
DA 1168	TOWER B LEVEL 21 & 22 FLOOR PLANS	D
DA 1169	TOWER B LEVEL 23 & 24 FLOOR PLANS	D
DA 1170	TOWER B LEVEL 25 & 26 FLOOR PLANS	D
DA 1171	TOWER B LEVEL 27 & 28 FLOOR PLANS	D
DA 1172	TOWER B LEVEL 29 & 30 FLOOR PLANS	D
DA 1173	TOWER B LEVEL 31 & 32 FLOOR PLANS	E
DA 1174	TOWER B LEVEL 33 & 34 FLOOR PLANS	D
DA 1175	TOWER B LEVEL 35 & 36 FLOOR PLANS	D
DA 1176	TOWER B LEVEL 37 & 38 FLOOR PLANS	D
DA 1177	TOWER B LEVEL 39 & 40 FLOOR PLANS	D
DA 1178	TOWER B LEVEL 41 & 42 FLOOR PLANS	D
DA 1179	TOWER B LEVEL 43 & 44 FLOOR PLANS	D
DA 1180	TOWER B ROOF LEVEL	C
DA 2001	TOWER A NORTH ELEVATION	C
DA 2002	TOWER A SOUTH ELEVATION	C
DA 2003	TOWER A EAST ELEVATION	D
DA 2004	TOWER A WEST ELEVATION	E
DA 2021	TOWER B NORTH ELEVATION	C
DA 2022	TOWER B SOUTH ELEVATION	B
DA 2023	TOWER B EAST ELEVATION	C
DA 2024	TOWER B WEST ELEVATION	B
DA 2051	STREETSCAPE NORTH & EAST ELEVATIONS	E
DA 2052	STREETSCAPE SOUTH & WEST ELEVATIONS	E
DA 3001	TOWER A - SECTION A	C
DA 3002	TOWER A - SECTION B	B
DA 3003	TOWER B - SECTION A	B
DA 3004	TOWER B - SECTION B	A
DA 3105	CONDENSER ROOM DETAIL	C
DA 5001	ADAPTABLE UNITS SHEET 1	C
DA 5002	ADAPTABLE UNITS SHEET 2	B
DA 5003	ADAPTABLE UNITS SHEET 3	B
DA 5004	ADAPTABLE UNITS SHEET 4	B
DA 6001	SHADOW DIAGRAM SHEET 1	C
DA 6002	SHADOW DIAGRAM SHEET 2	C

DRAWING LIST

DRAWING NO.	DRAWING NAME	REVISION
DA 6003	SHADOW DIAGRAM SHEET 3	C
DA 6004	SHADOW DIAGRAM SHEET 4	C
DA 6005	SHADOW DIAGRAM SHEET 5	C
DA 6006	SHADOW DIAGRAM SHEET 6	C
DA 7001	GFA CALCULATION TOWER A SHEET 1	D
DA 7002	GFA CALCULATION TOWER A SHEET 2	D
DA 7003	GFA CALCULATION TOWER A SHEET 3	D
DA 7004	GFA CALCULATION TOWER B SHEET 1	B
DA 7005	GFA CALCULATION TOWER B SHEET 2	C
DA 7006	GFA SCHEDULE	D
DA 7031	3D VIEW SHEET 1 - CORNER OF PARKES & MCGRAW STREET	A
DA 7032	3D VIEW - SHEET 2 - PERSPECTIVE FROM ROBIN THOMAS RESERVE	A
DA 7041	FINISHES SCHEDULE	C
DA 7051	VENTILATION DIAGRAMS SHEET 1	D
DA 7052	VENTILATION DIAGRAMS SHEET 2	E
DA 7091	SOLAR STUDY COMPARISON- SUN VIEW 21 JUNE @ 8am	A
DA 7092	SOLAR STUDY COMPARISON- SUN VIEW 21 JUNE @ 9am	A
DA 7093	SOLAR STUDY COMPARISON- SUN VIEW 21 JUNE @ 10am	A
DA 7094	SOLAR STUDY COMPARISON- SUN VIEW 21 JUNE @ 11am	A
DA 7095	SOLAR STUDY COMPARISON- SUN VIEW 21 JUNE @ 12pm	A
DA 7096	SOLAR STUDY COMPARISON- SUN VIEW 21 JUNE @ 1pm	A
DA 7097	SOLAR STUDY COMPARISON- SUN VIEW 21 JUNE @ 2pm	A
DA 7098	SOLAR STUDY COMPARISON- SUN VIEW 21 JUNE @ 3pm	A
DA 7099	SOLAR STUDY COMPARISON- SUN VIEW 21 JUNE @ 4pm	A
DA 7101	SOLAR ACCESS PLAN TOWER A SHEET 1	B
DA 7102	SOLAR ACCESS PLAN TOWER A SHEET 2	B
DA 7103	SOLAR ACCESS PLAN TOWER A SHEET 3	B
DA 7104	SOLAR ACCESS PLAN TOWER B SHEET 1	A
DA 7105	SOLAR ACCESS PLAN TOWER B SHEET 2	A
DA 7151	SOLAR STUDY- SUN VIEW 21 JUNE @ 8am	B
DA 7152	SOLAR STUDY- SUN VIEW 21 JUNE @ 9am	B
DA 7153	SOLAR STUDY- SUN VIEW 21 JUNE @ 10am	B
DA 7154	SOLAR STUDY- SUN VIEW 21 JUNE @ 11am	B
DA 7155	SOLAR STUDY- SUN VIEW 21 JUNE @ 12pm	B
DA 7156	SOLAR STUDY- SUN VIEW 21 JUNE @ 1pm	B
DA 7157	SOLAR STUDY- SUN VIEW 21 JUNE @ 2pm	B
DA 7158	SOLAR STUDY- SUN VIEW 21 JUNE @ 3pm	B
DA 7159	SOLAR STUDY- SUN VIEW 21 JUNE @ 4pm	B
DA 7160	SOLAR SCHEDULE	A
DA 7171	SOLAR ACCESS APARTMENT VIEW SHEET 1	A
DA 7172	SOLAR ACCESS APARTMENT VIEW SHEET 2	A
DA 7501	BUILDING LEP HEIGHT BLANKET	B
DA 8001	TOWER A - WINDOW SCHEDULE FLOOR PLAN (SHEET 1)	C
DA 8002	TOWER A - WINDOW SCHEDULE FLOOR PLAN (SHEET 2)	C
DA 8003	TOWER A - WINDOW SCHEDULE FLOOR PLAN (SHEET 3)	D
DA 8004	TOWER A - WINDOW SCHEDULE FLOOR PLAN (SHEET 4)	D
DA 8005	TOWER A - WINDOW SCHEDULE FLOOR PLAN (SHEET 5)	C
DA 8006	TOWER A - WINDOW SCHEDULE FLOOR PLAN (SHEET 6)	C
DA 8007	TOWER A - WINDOW SCHEDULE FLOOR PLAN (SHEET 7)	C
DA 8101	TOWER B - WINDOW SCHEDULE FLOOR PLAN (SHEET 1)	A
DA 8102	TOWER B - WINDOW SCHEDULE FLOOR PLAN (SHEET 2)	B
DA 8103	TOWER B - WINDOW SCHEDULE FLOOR PLAN (SHEET 3)	B
DA 8104	TOWER B - WINDOW SCHEDULE FLOOR PLAN (SHEET 4)	C
DA 8105	TOWER B - WINDOW SCHEDULE FLOOR PLAN (SHEET 5)	C
DA 8106	TOWER B - WINDOW SCHEDULE FLOOR PLAN (SHEET 6)	C
DA 8107	TOWER B - WINDOW SCHEDULE FLOOR PLAN (SHEET 7)	B
DA 8108	TOWER B - WINDOW SCHEDULE FLOOR PLAN (SHEET 8)	C
DA 9001	SOLAR ACCESS TO C.O.S SHEET 1	A
DA 9002	SOLAR ACCESS TO C.O.S SHEET 2	A
DA 9003	SOLAR ACCESS TO C.O.S SHEET 3	A
DA 9005	VERTICAL VILLAGES CONCEPT SHEET 1	A
DA 9006	VERTICAL VILLAGES CONCEPT SHEET 2	A
DA 9007	VERTICAL VILLAGES CONCEPT SHEET 3	B
DA 9008	VERTICAL VILLAGES CONCEPT SHEET 4	A
DA 9010	END OF CORRIDOR PLAN, SECTION AND ELEVATION	A
DA 9050	TOWER SECTIONS - NORTH TOWER A	A
DA 9051	TOWER SECTIONS - WEST TOWER A	A
DA 9052	TOWER SECTIONS - SOUTH TOWER A	A
DA 9053	TOWER SECTIONS - EAST TOWER A	A
DA 9054	TOWER SECTIONS - NORTH TOWER B	A
DA 9055	TOWER SECTIONS - WEST TOWER B	A
DA 9056	TOWER SECTIONS - SOUTH TOWER B	A
DA 9057	TOWER SECTIONS - EAST TOWER B	A
DA 9058	TYPICAL DETAILS SHEET 1	B
DA 9059	TYPICAL DETAILS SHEET 2	B
DA 9060	TYPICAL DETAILS SHEET 3	B
DA 9061	TYPICAL DETAILS SHEET 4	A
DA 9062	TYPICAL DETAILS SHEET 5	B
DA 9063	TYPICAL DETAILS SHEET 6	B
DA 9064	TYPICAL DETAILS SHEET 7	B
DA 9100	TOWER A ROOF FEATURE	A
DA 9101	TOWER B ROOF FEATURE	A



REFERENCES

DRAWINGS TO BE READ IN CONJUNCTION WITH BUT NOT LIMITED TO ALL STRUCTURAL, ENGINEERS, STORMWATER ENGINEERS, LANDSCAPE ARCHITECTS, AND OTHER ASSOCIATED PLANS & REPORTS

REFER TO THE BASIS REPORT FOR ADDITIONAL REQUIREMENTS.

NOTES

ALL DIMENSIONS AND DETAILS ARE TO BE VERIFIED ON SITE AND ALL CHANGES OR ANY DISCREPANCIES TO BE NOTIFIED TO THE ARCHITECT.
FIXED DIMENSIONS TO BE USED AT ALL TIME.
DO NOT SCALE MEASUREMENTS OFF DRAWINGS.

J	21.05.22	General Amendments
I	18.07.22	General Amendments
H	31.03.22	General Amendments
G	15.03.22	General Amendments
F	21.10.21	General Amendments
E	07.09.21	General Amendments
D	30.04.21	General Amendments
C	24.03.21	General Amendments
B	14.10.20	General Amendments
A	12.08.20	DA Submission
Rev.	Date	Description

Project Architect

CDΔ
CDARCHITECTS

LEVEL 2, 60 PARK STREET
SYDNEY NSW 2000
P: 02 9287 2000
W: www.cdarchitects.com.au

© Copyright

The copyright of this drawing together with any other documents prepared by CD Architects (CDA) remains the property of CDA. CDA grants license for the use of this document for the purpose for which it is intended. The license is not transferable without permission from CDA.
Notwithstanding, Architect: Jacki Yarnes ©2020 ABN: 24 243 256 327



Drawing Title

COVER SHEET

DA SUBMISSION

Job no.	Drawing no.	Rev.
J19458D	DA 1001	J
Drawn by	Checked by	Approved by
HS	RJ	JY
Date	Date	Date
		APRIL, 2020

PROPOSED MIXED USE DEVELOPMENT

189 MACQUARIE STREET, PARRAMATTA



REFERENCES

DRAWINGS TO BE READ IN CONJUNCTION WITH BUT NOT LIMITED TO ALL
STRUCTURAL, ENGINEERS, STORMWATER ENGINEERS,
LANDSCAPE ARCHITECTS, AND OTHER ASSOCIATED PLANS & REPORTS
REFER TO THE BASIS REPORT FOR ADDITIONAL REQUIREMENTS.

NOTES

ALL DIMENSIONS AND DETOUPS ARE TO BE VERIFIED ON SITE AND
ALL DIMENSIONS ON ANY DISCREPANCIES TO BE NOTIFIED
TO THE ARCHITECT.
FIGURES DIMENSIONS TO BE USED AT ALL TIME.
DO NOT SCALE MEASUREMENTS OFF DRAWINGS.





0006444370 28 Apr 2022

Assessor: Xiaoran Sun
Accreditation No. HEFA10127
Address:
169 Macquarie Street,
Parramatta, NSW, 2150

www.natwidehouse.com.au



Rev.	Date	Description
A	12.06.20	DA Submission

Scale

0	1	2	4	6	8
1:100 at A1		1:200 at A3			

Project Architect



CDARCHITECTS

LEVEL 2, 80 PARK STREET
SYDNEY NSW 2000
P: 02 9267 2000
W: www.cdarchitects.com.au

© Copyright

The copyright of this drawing together with any other documents prepared
by CD Architects (CDA) remains the property of CDA. CDA grants license for
the use of this document for the purposes for which it is intended. The license
is not transferable without permission from CDA.

Notified Architect: Jacqui Yammine 0395, ABN: 24 243 265 327



Member
Australian
Institute of
Architects

Project

PROPOSED MIXED USE DEVELOPMENT

189 MACQUARIE STREET,
PARRAMATTA

Drawing Title

SITE LOCATION

DA SUBMISSION			
Job no.	Drawing no.	Rev.	
J19458D	DA 1004	A	
Drawn by	Checked by	Approved by	Date
HS	RJ	JY	APRIL, 2020



REFERENCES
DRAWINGS TO BE READ IN CONJUNCTION WITH BUT NOT LIMITED TO ALL
STRUCTURAL ENGINEERS, STORMWATER ENGINEERS,
LANDSCAPE ARCHITECTS, AND OTHER ASSOCIATED PLANS & REPORTS
REFER TO THE BASIS REPORT FOR ADDITIONAL REQUIREMENTS.
NOTES
ALL DIMENSIONS AND SETOUTS ARE TO BE VERIFIED ON SITE AND
ALL OMISSIONS OR ANY DISCREPANCIES TO BE NOTIFIED
TO THE ARCHITECT.
FIGURED DIMENSIONS TO BE USED AT ALL TIME.
DO NOT SCALE MEASUREMENTS OFF DRAWINGS.



LIST OF AMENDMENTS 31.03.22
- facade facing Macquarie Street revised

Rev.	Date	Description
D	31.03.22	General Amendments
C	07.09.21	General Amendments
B	14.10.20	General Amendments
A	12.08.20	DA Submission

Scale
0 2 4 8 12 16
1:200 at A1 1:400 at A3

Project Architect
ODA
CDARCHITECTS
LEVEL 2, 80 PARK STREET
SYDNEY NSW 2000
P: 02 9267 2000
W: www.cdarchitects.com.au
© Copyright
The copyright of this drawing together with any other documents prepared
by CD Architects (CDA) remains the property of CDA. CDA grants license for
the use of this document for the purpose for which it is intended. The license
is not transferable without permission from CDA.
Nonresident Architect: Jacob Yarminec 6355, ABN 24 243 265 327



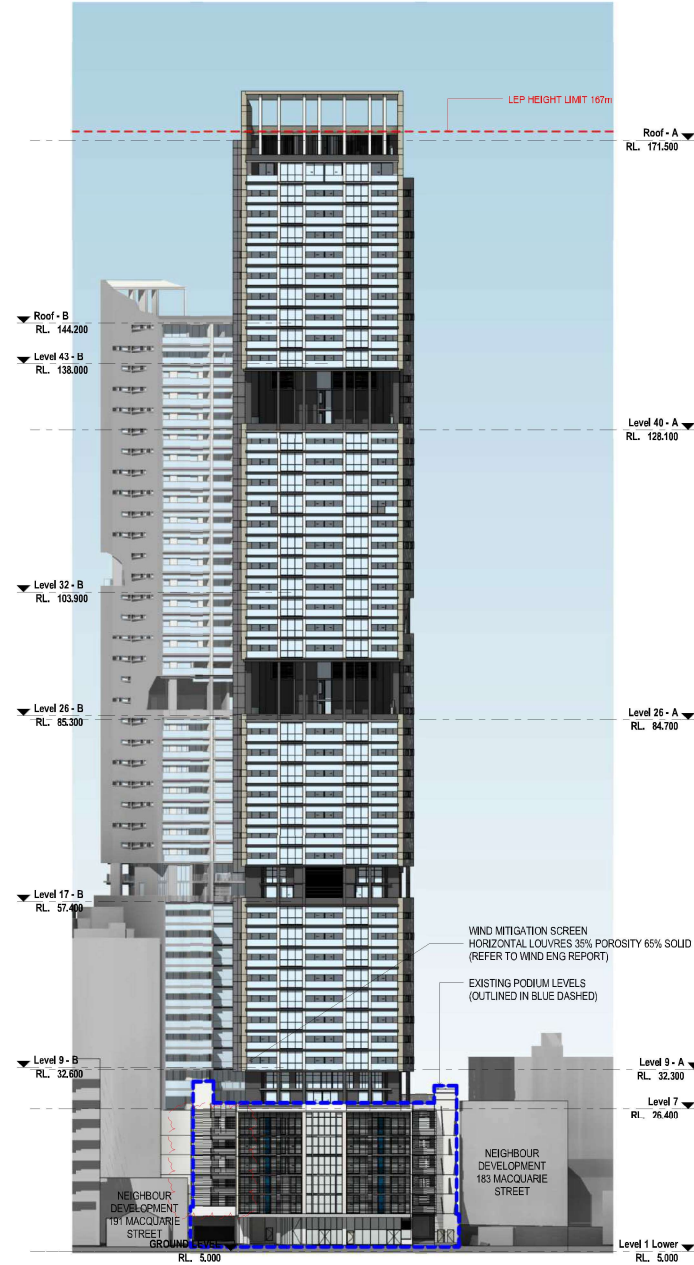
PROPOSED MIXED USE DEVELOPMENT

189 MACQUARIE STREET,
PARRAMATTA
Drawing Title
LEVEL 7 FLOOR PLAN

DA SUBMISSION			
Job no.	Drawing no.	Rev.	
J19458D	DA 1114	D	
Drawn by	Checked by	Approved by	Date
HS	RJ	JY	APRIL 2020

REFERENCES
DRAWINGS TO BE READ IN CONJUNCTION WITH BUT NOT LIMITED TO ALL
STRUCTURAL, ENGINEERS, STORMWATER ENGINEERS,
LANDSCAPE ARCHITECTS, AND OTHER ASSOCIATED PLANS & REPORTS
REFER TO THE BASIC REPORT FOR ADDITIONAL REQUIREMENTS.

NOTES
ALL DIMENSIONS AND SETOUTS ARE TO BE VERIFIED ON SITE AND
ALL DIMENSIONS OR ANY DISCREPANCIES TO BE NOTIFIED
TO THE ARCHITECT.
PROPOSED DIMENSIONS TO BE USED AT ALL TIME.
DO NOT SCALE MEASUREMENTS OFF DRAWINGS.



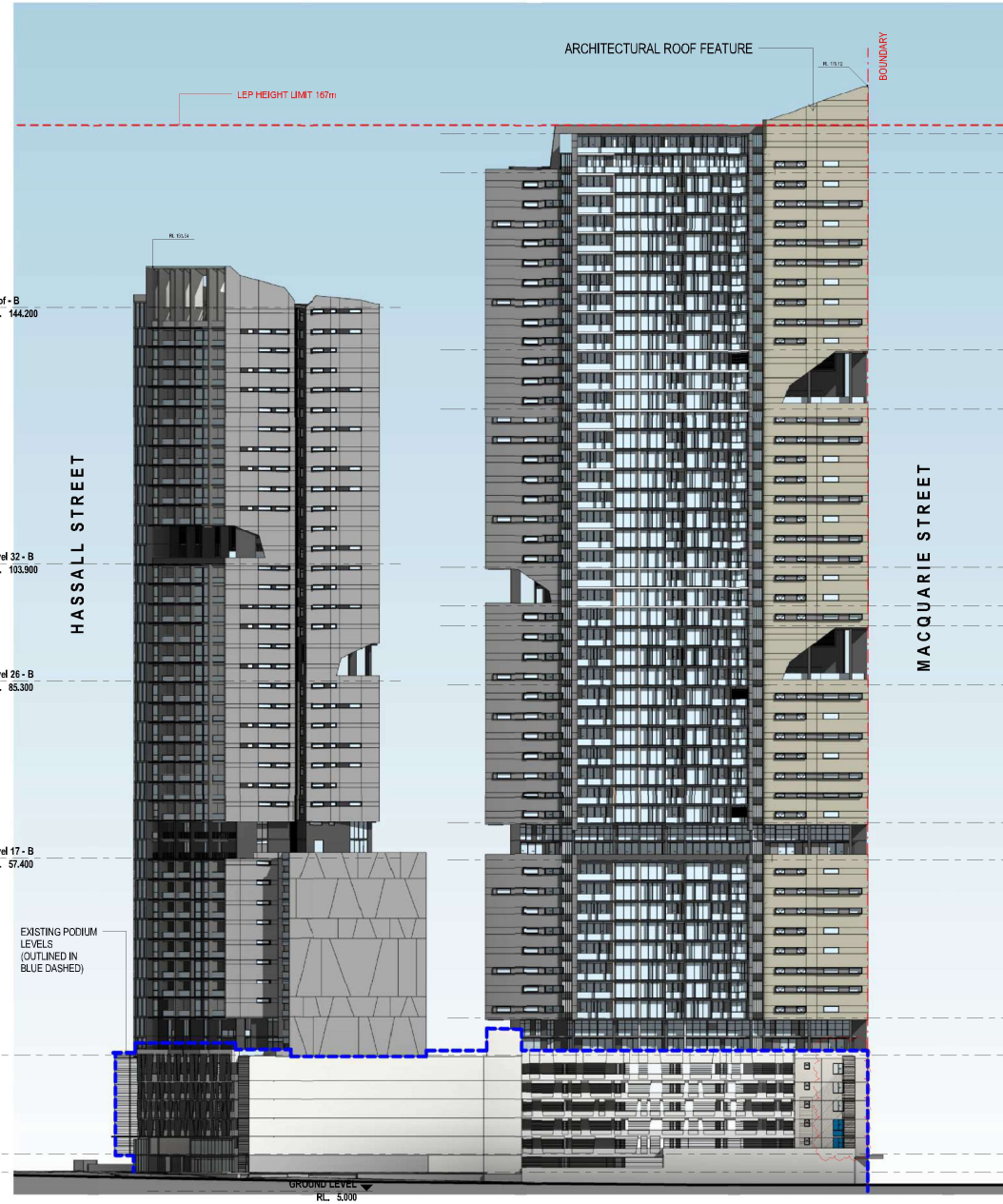
1 STREETSCAPE NORTH ELEVATION

1 : 400 at A1 1 : 800 at A3



2 STREETSCAPE EAST ELEVATION

1 : 400 at A1 1 : 800 at A3



Roof - A	RL 171.500
Level 52 - A	RL 165.300
Level 43 - A	RL 137.400
Level 40 - A	RL 128.100
Level 32 - A	RL 103.900
Level 26 - A	RL 85.300
Level 17 - B	RL 57.400
Level 9 - A	RL 32.300
Level 7	RL 26.400
Level 2	RL 10.800
Level 1 Lower	RL 5.000

LIST OF AMENDMENTS 18.07.22
- PODIUM HEIGHT POROUS SCREEN
ADDED

Rev.	Date	Description
E	18.07.22	General Amendments
D	31.03.22	General Amendments
C	21.10.21	General Amendments
B	14.10.20	General Amendments
A	12.06.20	DA Submission

AS INDICATED

Project Architect



Level 19 - A	RL 63.000
Level 17 - A	RL 57.100
Level 9 - A	RL 32.300
Level 7	RL 26.400

LEVEL 2, 80 PARK STREET
SYDNEY NSW 2000
P: 02 9267 2000
W: www.cdarchitects.com.au

© Copyright
The copyright of this drawing together with any other documents prepared
by CD Architects (CDA) remains the property of CDA. CDA grants license for
the use of this document for the purpose for which it is intended. The license
is not transferable without permission from CDA.
Notwithstanding, Jackie Yarnamine 6395, ABN: 24 243 265 327



PROPOSED MIXED USE DEVELOPMENT

189 MACQUARIE STREET,
PARRAMATTA

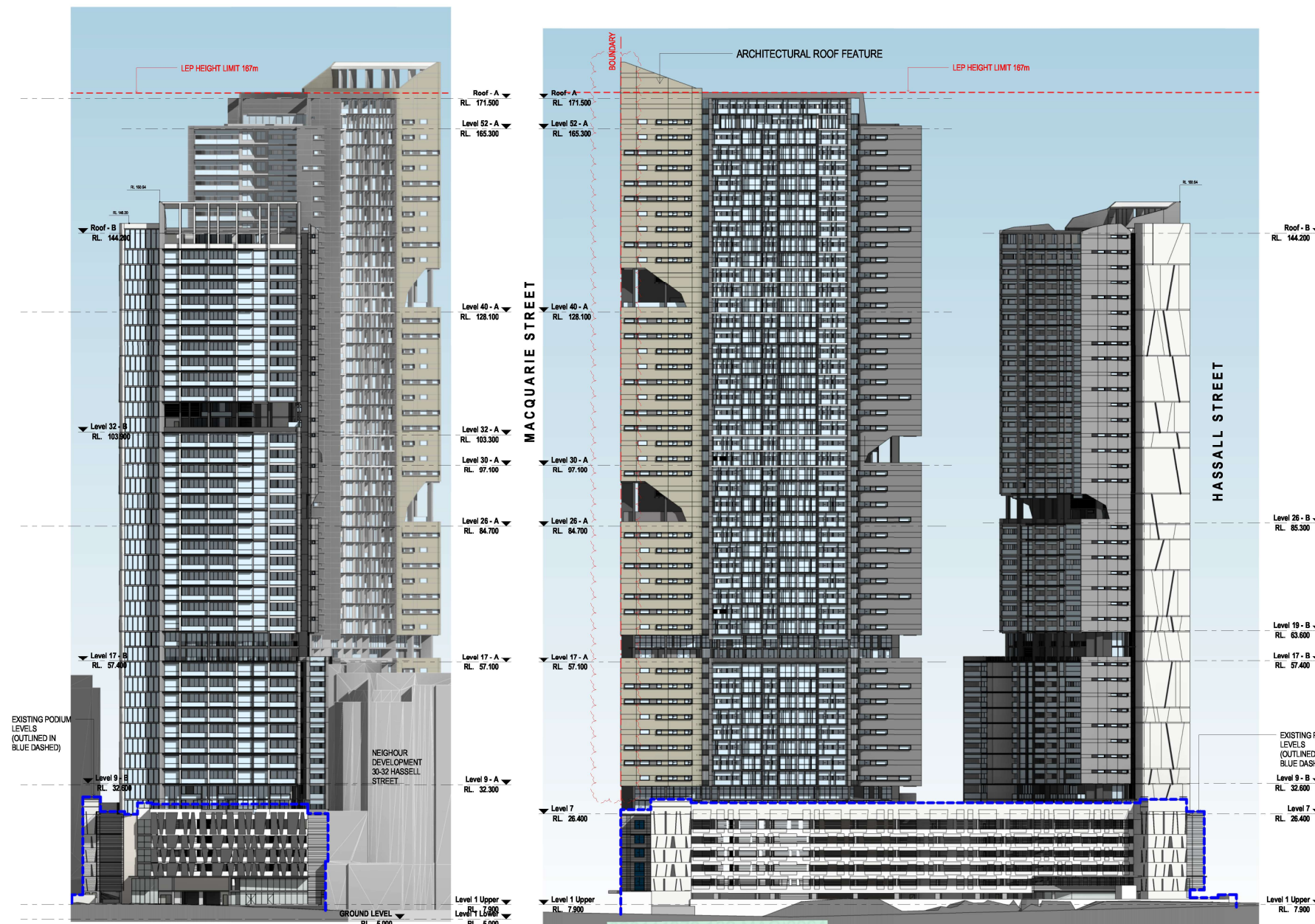
Drawing Title
STREETSCAPE NORTH & EAST
ELEVATIONS

DA SUBMISSION

Job no.	Drawing no.	Rev.	
J19458D	DA 2051	E	
Drawn by	Checked by	Approved by	Date
HG	RJ	JY	APRIL 2020

AS CONSTRUCTED PODIUM
INDICATED BY BLUE OUTLINE

REFERENCES
DRAWINGS TO BE READ IN CONJUNCTION WITH BUT NOT LIMITED TO ALL
STRUCTURAL ENGINEERS, STORMWATER ENGINEERS,
LANDSCAPE ARCHITECTS, AND OTHER ASSOCIATED PLANS & REPORTS
REFER TO THE BASIS REPORT FOR ADDITIONAL REQUIREMENTS.
NOTES
ALL DIMENSIONS AND SETOUTS ARE TO BE VERIFIED ON SITE AND
ALL OMISSIONS OR ANY DISCREPANCIES TO BE NOTIFIED
TO THE ARCHITECT.
FIGURED DIMENSIONS TO BE USED AT ALL TIME.
DO NOT SCALE MEASUREMENTS OFF DRAWINGS.



LIST OF AMENDMENTS 31.03.22
- facade facing Macquarie street revised

Rev.	Date	Description
E	31.03.22	General Amendments
D	21.10.21	General Amendments
C	24.03.21	General Amendments
B	14.10.20	General Amendments
A	12.08.20	DA Submission

AS INDICATED

Project Architect
CDARCHITECTS
LEVEL 2, 80 PARK STREET
SYDNEY NSW 2000
P: 02 9267 2000
W: www.cdarchitects.com.au
© Copyright
The copyright of this drawing together with any other documents prepared
by CD Architects (CDA) remains the property of CDA. CDA grants license for
the use of this document for the purpose for which it is intended. The license
is not transferable without permission from CDA.
Non-Resident Architect: Jacqui Yarminec BSCS, ARIA 24 243 205 327
Member Australian Institute of Architects

Project
PROPOSED MIXED USE DEVELOPMENT
189 MACQUARIE STREET,
PARRAMATTA
Drawing Title
**STREETSCAPE SOUTH & WEST
ELEVATIONS**

DA SUBMISSION			
Job no.	Drawing no.	Rev.	
J19458D	DA 2052	E	
Drawn by	Checked by	Approved by	Date
HS	RJ	JY	APRIL 2020

1 STREETSCAPE SOUTH ELEVATION

1 : 400 at A1 1:800 at A3



AS CONSTRUCTED PODIUM
INDICATED BY BLUE OUTLINE



REFERENCES

DRAWINGS TO BE READ IN CONJUNCTION WITH BUT NOT LIMITED TO ALL
STRUCTURAL ENGINEERS, STORMWATER ENGINEERS,
LANDSCAPE ARCHITECTS, AND OTHER ASSOCIATED PLANS & REPORTS.
REFER TO THE BASIS REPORT FOR ADDITIONAL REQUIREMENTS.

NOTES

ALL DIMENSIONS AND SETOUTS ARE TO BE VERIFIED ON SITE AND
ALL OMISSIONS OR ANY DISCREPANCIES TO BE NOTIFIED
TO THE ARCHITECT.
FIGURED DIMENSIONS TO BE USED AT ALL TIME.
DO NOT SCALE MEASUREMENTS OFF DRAWINGS.

Rev.	Date	Description
A	12.08.20	DA Submission

1 2 4 6 8
1:100 at A1 1:200 at A3

Project Architect

CDARCHITECTS

LEVEL 2, 80 PARK STREET
SYDNEY NSW 2000
P: 02 9267 2000
W: www.cdarchitects.com.au

© Copyright

The copyright of this drawing together with any other documents prepared
by CD Architects (CCA) remains the property of CCA. CCA grants licenses for
the use of this document for the purpose for which it is intended. The license
is not transferable without permission from CCA.
Non-Resident Architect: Jacob Yammine 0355, ABN: 24 243 205 327

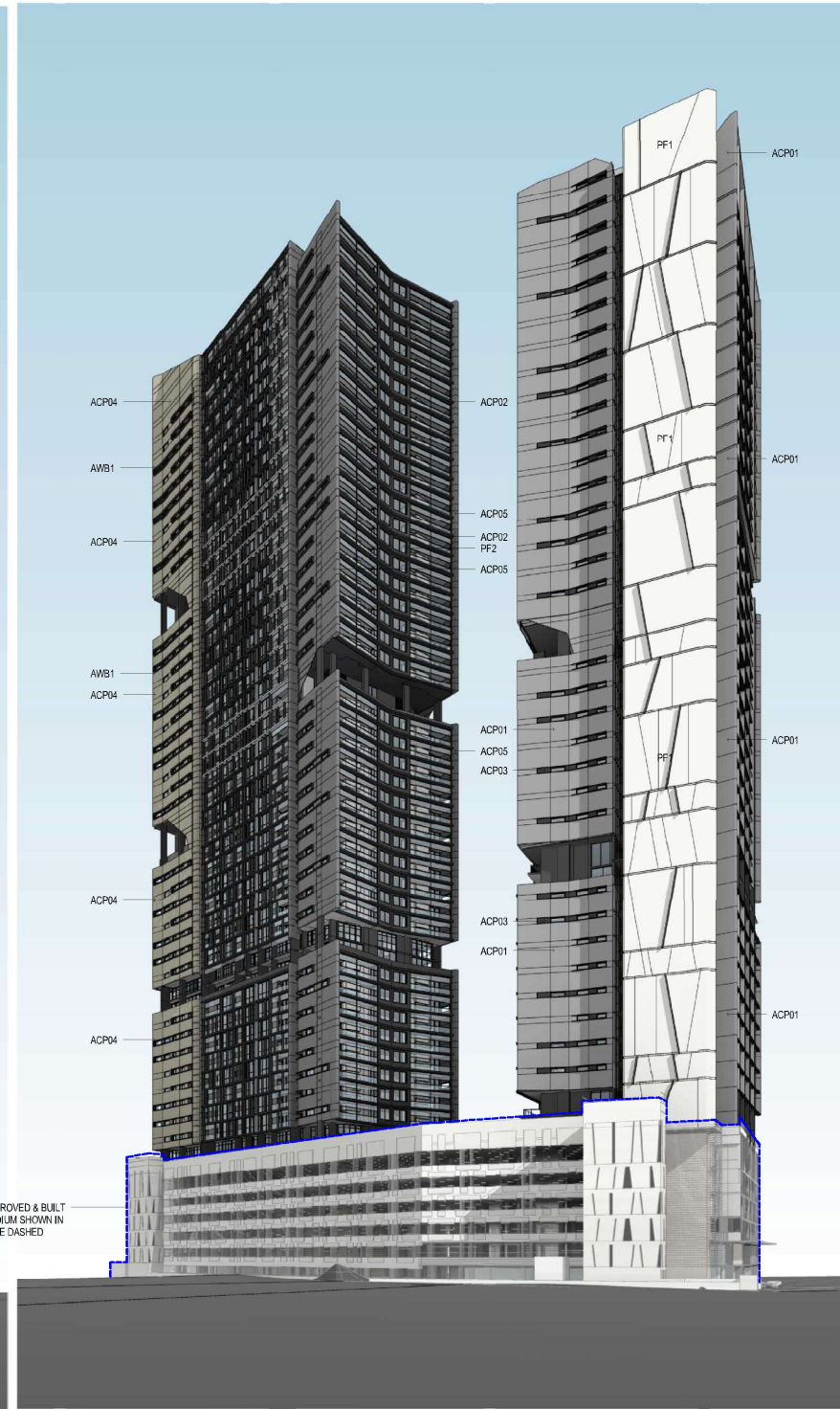
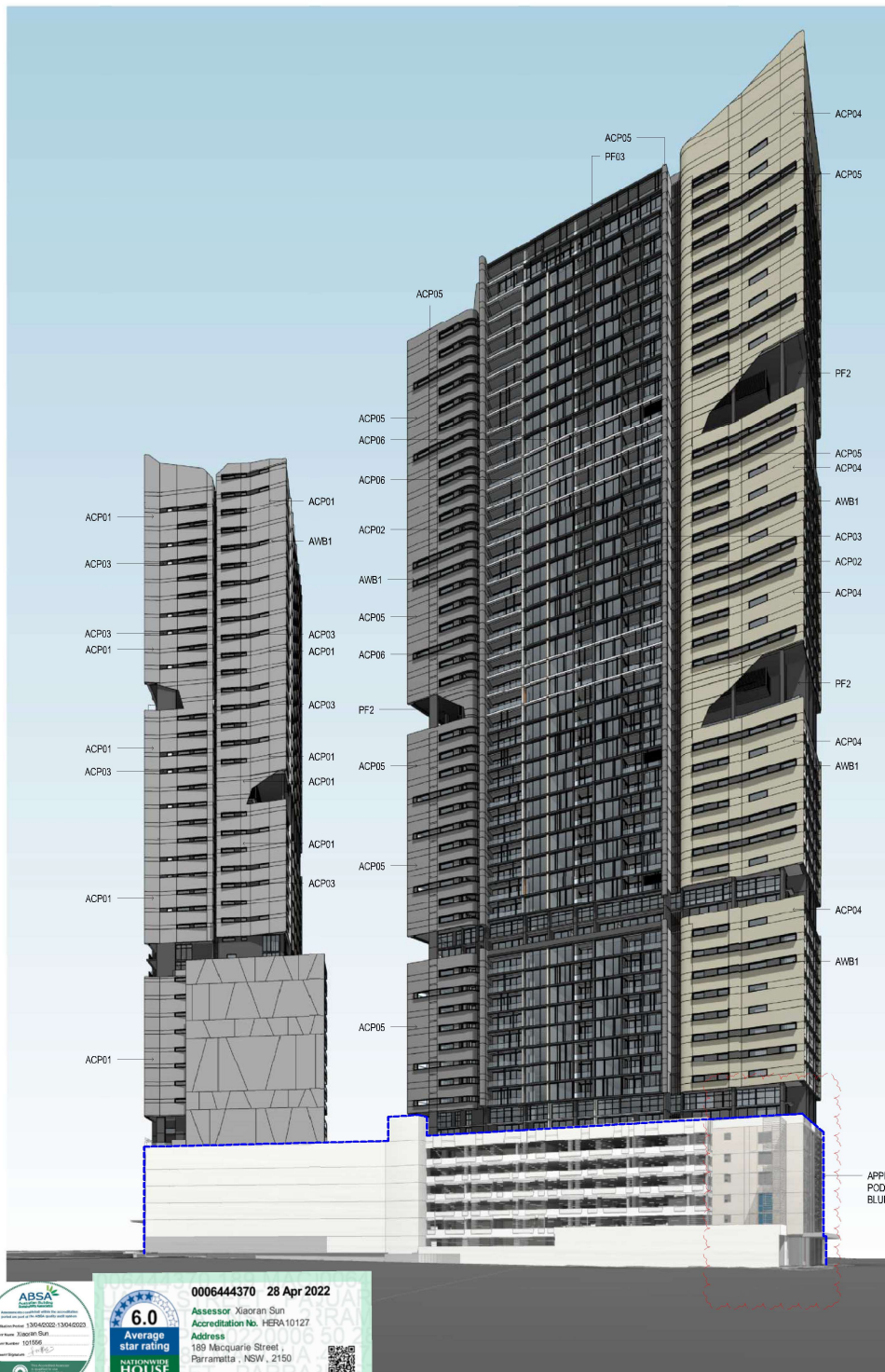
A+ Member
Australian
Institute of
Architects

Project
PROPOSED MIXED USE DEVELOPMENT

189 MACQUARIE STREET,
PARRAMATTA

Drawing Title
**3D VIEW - SHEET 2 - PERSPECTIVE FROM
ROBIN THOMAS RESERVE**

DA SUBMISSION			
Job no.	Drawing no.	Rev.	
J19458D	DA 7032	A	
Drawn by PY	Checked by RJ	Approved by JY	Date APRIL 2020



REFERENCES

DRAWINGS TO BE READ IN CONJUNCTION WITH BUT NOT LIMITED TO ALL STRUCTURAL, ENGINEERS, STORMWATER ENGINEERS, LANDSCAPE ARCHITECTS, AND OTHER ASSOCIATED PLANS & REPORTS. REFER TO THE BASIC REPORT FOR ADDITIONAL REQUIREMENTS.

NOTES

ALL DIMENSIONS AND SETOUTS ARE TO BE VERIFIED ON SITE AND ALL DIMENSIONS OR ANY DISCREPANCIES TO BE NOTIFIED TO THE ARCHITECT.
FOURD DIMENSIONS TO BE USED AT ALL TIME.
DO NOT SCALE MEASUREMENTS OFF DRAWINGS.

MATERIAL LEGEND

- ACP01 ALUMINIUM COMPOSITE PANEL - SIMILAR OR EQUAL TO VITRACORE G2 METAL SILVER PEARL METALLIC
- ACP02 ALUMINIUM COMPOSITE PANEL - SIMILAR OR EQUAL TO VITRACORE G2 SOLID FINISH ENIGMA BLACK
- ACP03 ALUMINIUM COMPOSITE PANEL - SIMILAR OR EQUAL TO VITRACORE G2 SOLID FINISH MONUMENT GREY
- ACP04 ALUMINIUM COMPOSITE PANEL - SIMILAR OR EQUAL TO VITRACORE G2 METAL BRONZE METALLIC
- ACP05 ALUMINIUM COMPOSITE PANEL - SIMILAR OR EQUAL TO VITRACORE G2 METAL DARK GREY METALLIC
- ACP06 ALUMINIUM COMPOSITE PANEL - SIMILAR OR EQUAL TO VITRACORE G2 SOLID FINISH SNOW WHITE
- AWB1 DULUX MONUMENT BLACK POWDERCOAT FINISH WINDOW BOX FRAMES
- AWD1 ALUMINIUM FRAME WINDOWS & DOORS - SIMILAR OR EQUAL TO DULUX MONUMENT
- CG CLEAR GLASS PANEL OR WINDOWS
- PF1 PAINT FINISHED - SIMILAR OR EQUAL TO DULUX WHISPERWHITE
- PF2 PAINT FINISHED - SIMILAR OR EQUAL TO DULUX MONUMENT

Rev.	Date	Description
C	18.07.22	General Amendments
B	21.10.21	General Amendments
A	12.06.20	DA Submission

Scale
mm
0

LIST OF AMENDMENTS 18.07.22
PODIUM HEIGHT POROUS SCREENS
ADDED

Project Architect
CD ARCHITECTS
LEVEL 2, 80 PARK STREET
SYDNEY NSW 2000
P: 02 9287 2000
W: www.cdarchitects.com.au

© Copyright
The copyright of this drawing together with any other documents prepared by CD Architects (CDA) remains the property of CDA. CDA grants license for the use of this document for the purpose for which it is intended. The license is not transferable without permission from CDA.
Named Architect: Jacki Yammine 4395, ABN: 24 243 255 327

PROPOSED MIXED USE DEVELOPMENT

189 MACQUARIE STREET,
PARRAMATTA

Drawing Title
FINISHES SCHEDULE

DA SUBMISSION		
Job no.	Drawing no.	Rev.
J19458D	DA 7041	C
Drawn by HIS	Checked by RU	Approved by JY
Date APRIL 2020		

